



23 november 2021

Videosessie Kunst & Rouwverwerking

**K^L
AC**



Programma

Introductie raadslid RVS Ageeth Ouwehand

YODO door kunstenaar Laurien Schrooten

Tot Zover - Laura Cramwinckel

Rituelen - Martin Hoondert

Gesprek over de dood - kunstenaar Senad Alic

Panelgesprek o.l.v. van Myrthe Lenselink



Kunst en rouwverwerking Een goed gesprek over de dood

*Ageeth Ouwehand
Raad voor Volksgezondheid & Samenleving*



RVS: onafhankelijk strategisch adviesorgaan voor regering en parlement

Project over de dood dankzij VeRS

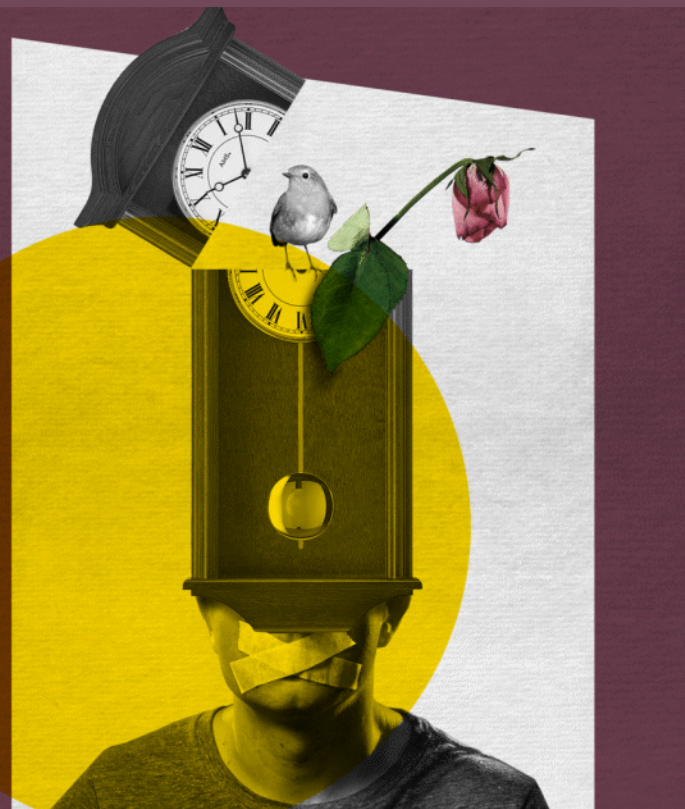
2 onderdelen:

- Podcast: Stervelingen
- Advies: Stervelingen – beter samenleven met de dood

Doel: de RVS bekijkt hoe we ervaringen met de dood, verlies en rouw als *samenleving* beter kunnen ondersteunen.



STERVE JINGEN



Podcast



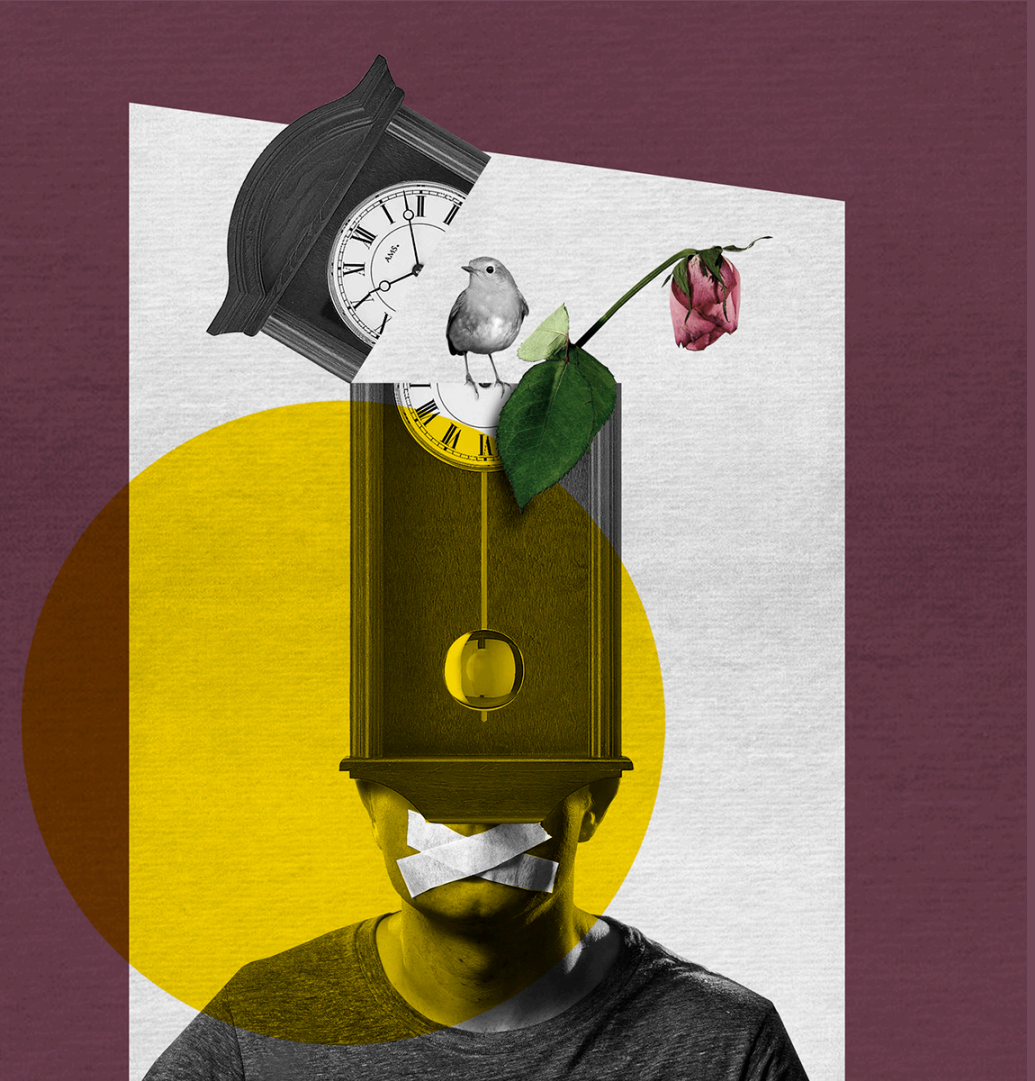
Advies:

Stervelingen

Beter samenleven met de dood

Hoe kunnen we beter samenleven met de dood, waar dat nu niet goed (genoeg) gaat?

1. Hoe kunnen we ons beter **uitdrukken** over sterven en rouwen?
2. Hoe kunnen we het sterven en rouwen beter **doen**?
3. Hoe kunnen we sterven en rouwen beter **regelen**?



↳ Rol voor kunst en kunstenaars

- Kunst als vehikel om te communiceren over de dood
- Juist ook ook non-verbaal
- Taak voor samenleving: normaliseer de dood



Raad ↵
Volksgezondheid
& Samenleving

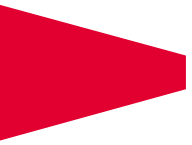
An impressionistic painting of a landscape. The scene features several dark, vertical tree trunks in the foreground. In the background, there are rolling hills or mountains rendered in shades of blue and green. A large, ornate chandelier with multiple white, bowl-shaped shades hangs from the top right corner. The overall style is textured and expressive, with visible brushstrokes.

23 november 2021

Videosessie Kunst & Rouwverwerking

The logo for KAC (Kunst en Aandacht) is located in the bottom right corner. It consists of the letters 'K', 'A', and 'C' in a bold, white, sans-serif font, arranged in a triangular pattern. A small 'L' is positioned above the 'C'. The logo is set against a red circular background.

K^LAC

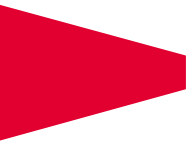


An impressionistic painting of a landscape. The scene features several dark, vertical tree trunks in the foreground. In the background, there are rolling hills or mountains rendered in shades of blue and green. A large, ornate chandelier with multiple white, bowl-shaped shades hangs from the top right corner. The overall style is textured and expressive, with visible brushstrokes.

23 november 2021

Videosessie Kunst & Rouwverwerking

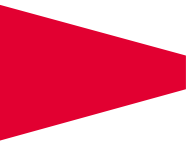
**K^L
AC**

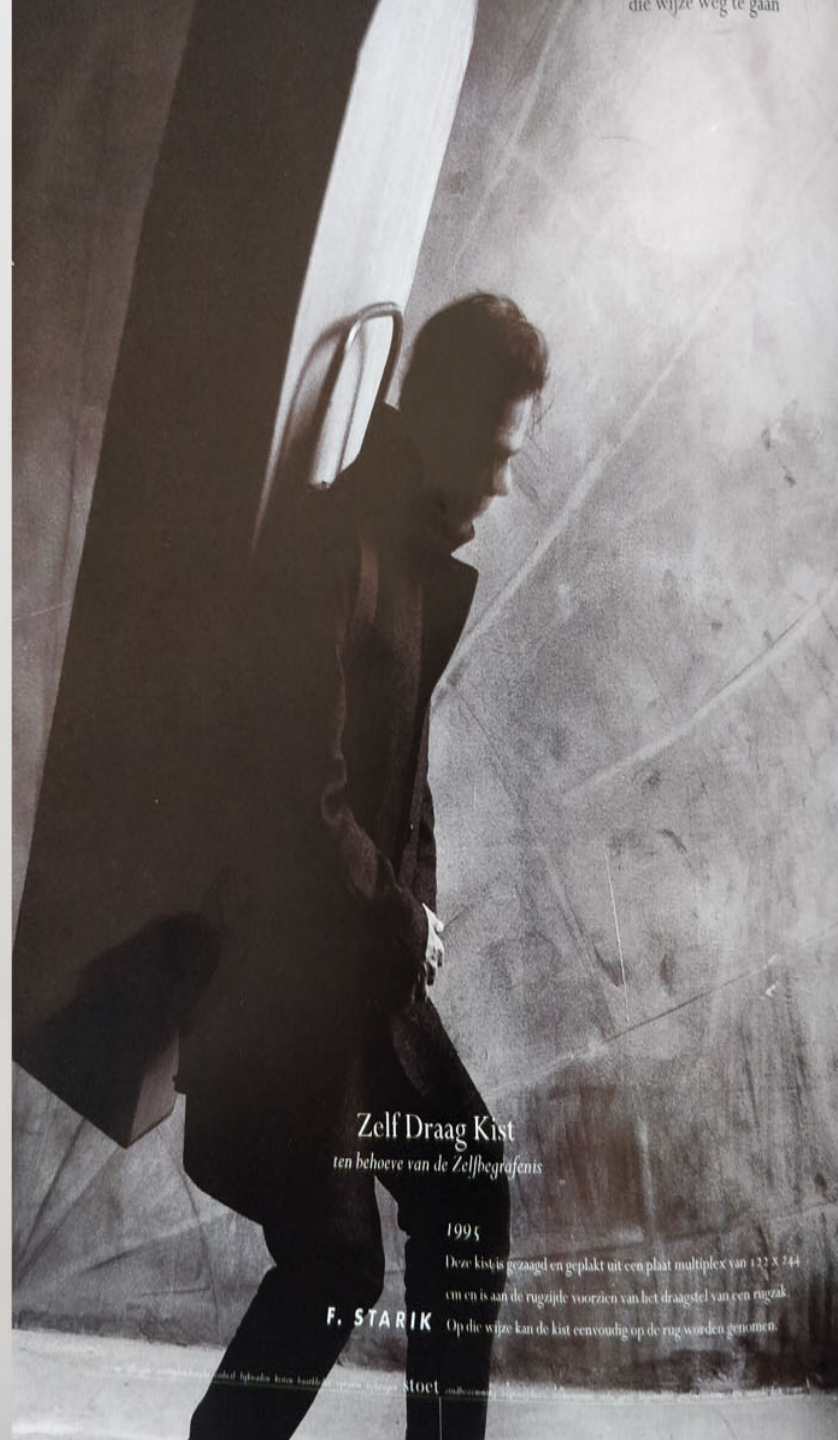
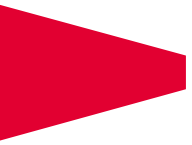


wegens omstandig- heden geopend

Nederlands
Uitvaart Museum **tot ZOVER**
Kruislaan 124 A'dam · totzover.nl







die wijze weg te gaan

Zelf Draag Kist
ten behoeve van de Zelfbegravenis

1995

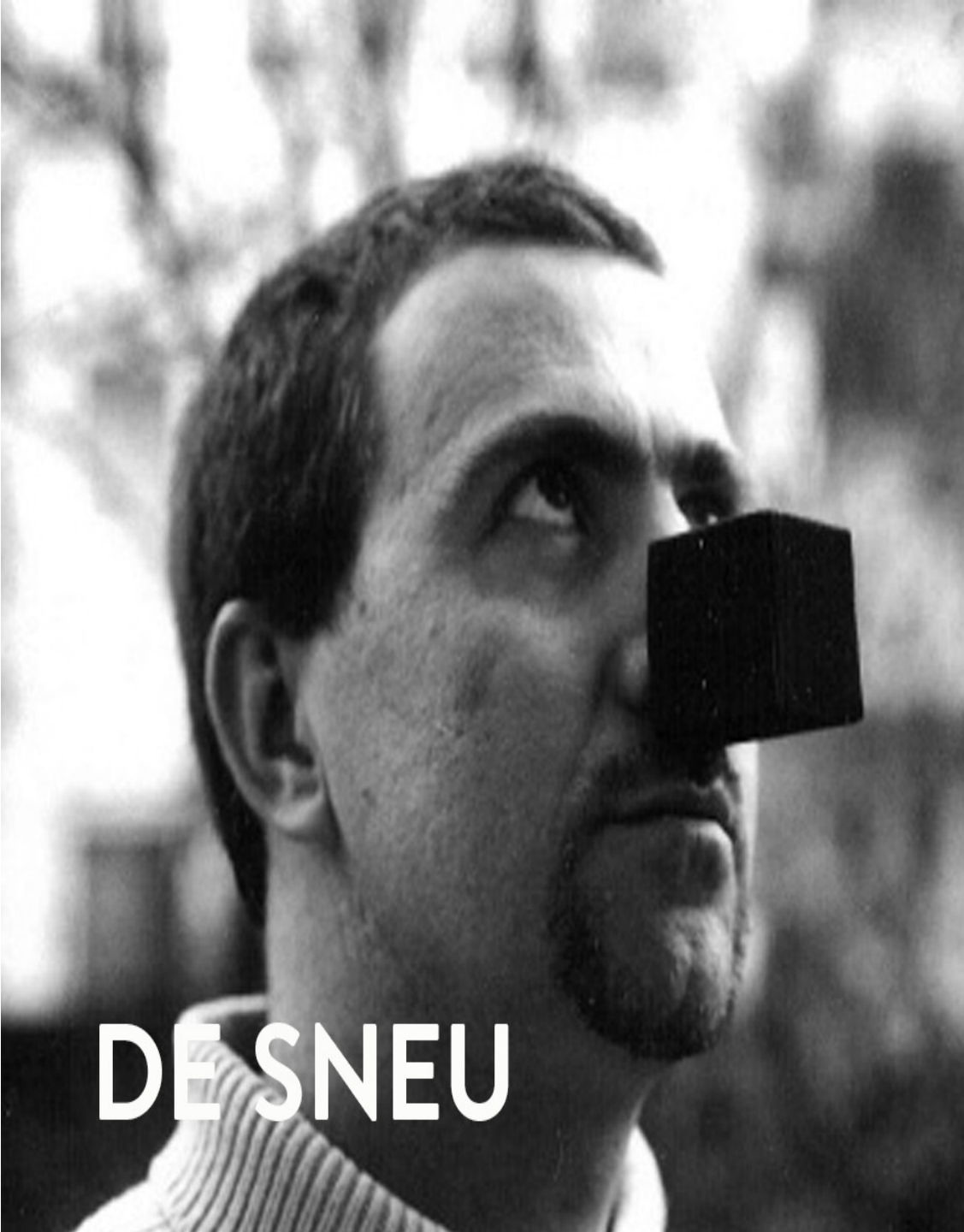
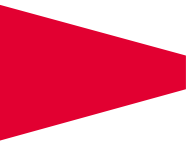
Deze kist is gezaagd en geplakt uit een plaat multiplex van 122 x 244 cm en is aan de rugzijde voorzien van het draagstel van een rugzak.

F. STARIK

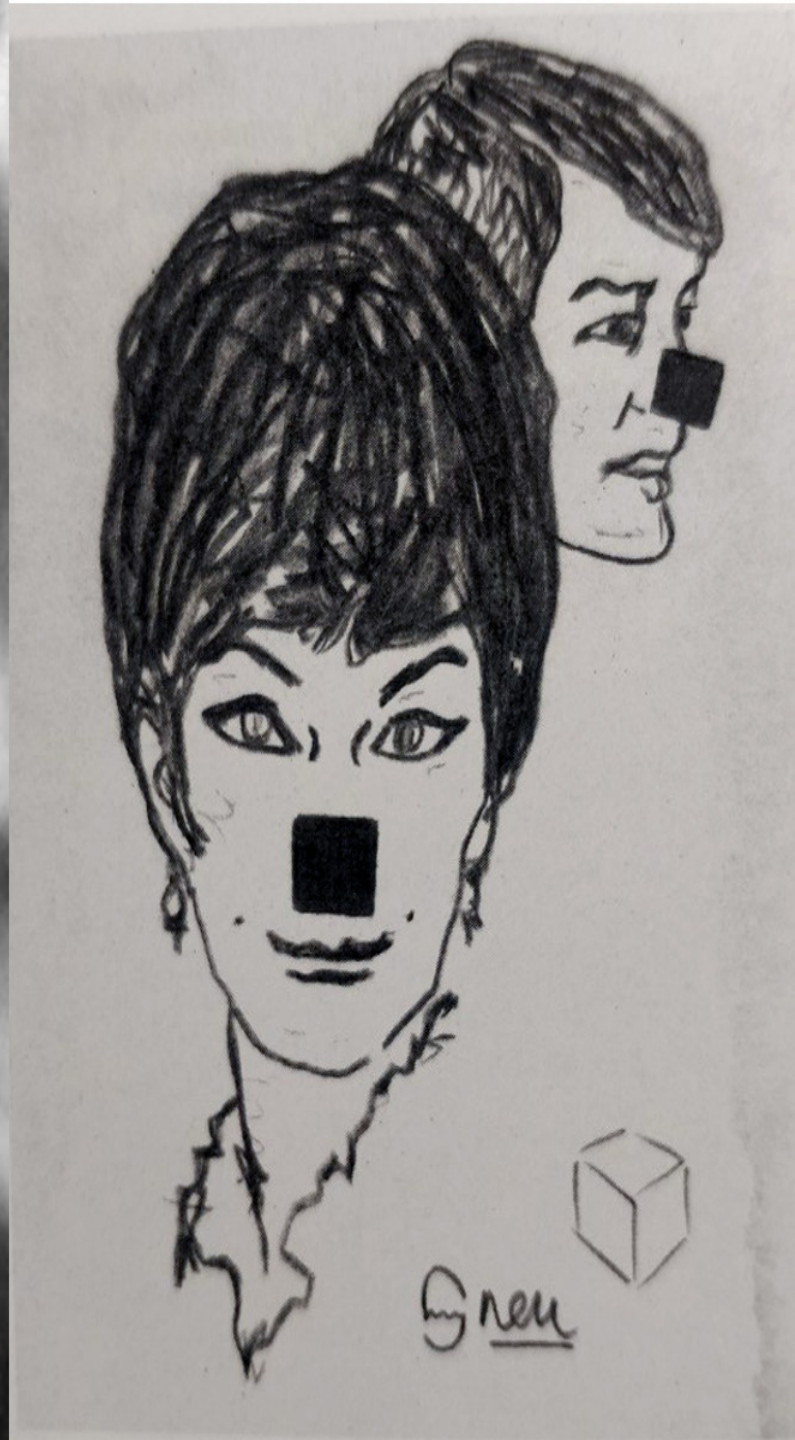
Op die wijze kan de kist eenvoudig op de rug worden genomen.

Stoel

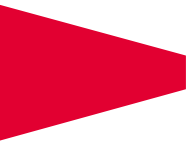




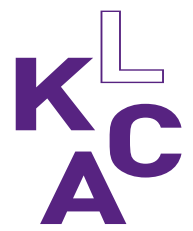
DE SNEU

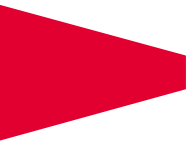


KL
AC

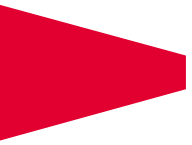


HERINNERING VERLICHT

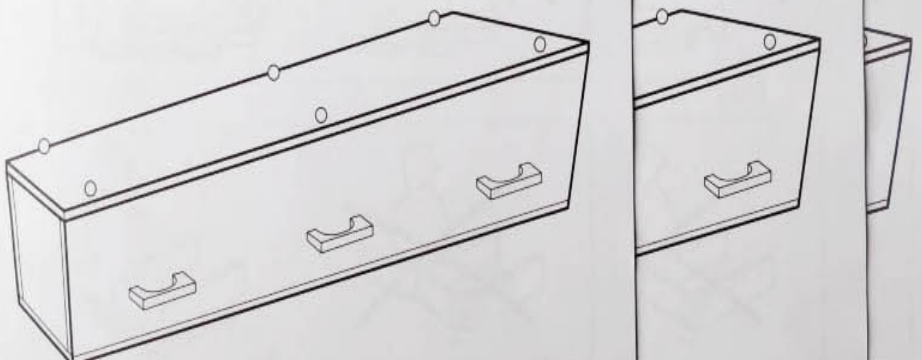




AS RITUELEN



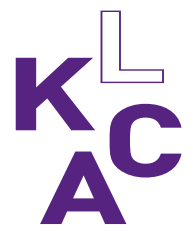
DÖDLIK IK K

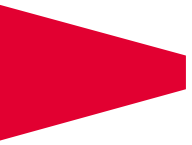


IKEA
Design and Quality
IKEA of Sweden

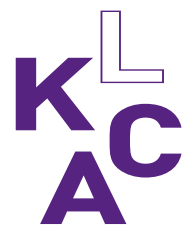
IKEA
Design and Quality
IKEA of Sweden

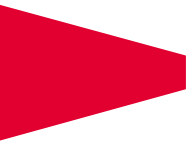
A
Quality
den





THE LAST SUPPER



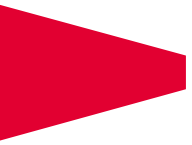


SIX INCHES UNDER



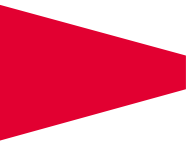
LEVEN

LEVEN

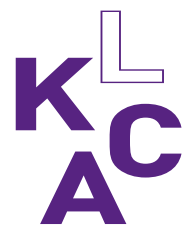


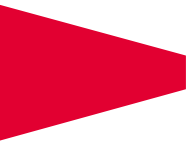
OVERGAVE





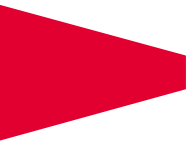
MOEDER & KIND





SCHEMERING





SCHEMERING



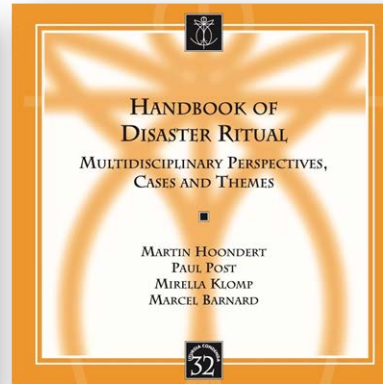
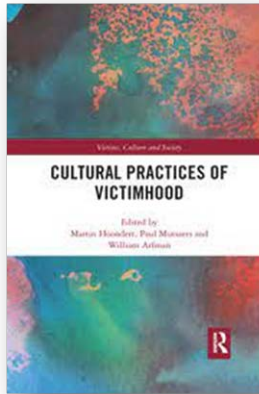


23 november 2021

Videosessie Kunst & Rouwverwerking



K^L
AC



FUNERAIRE
*) ACADEMIE



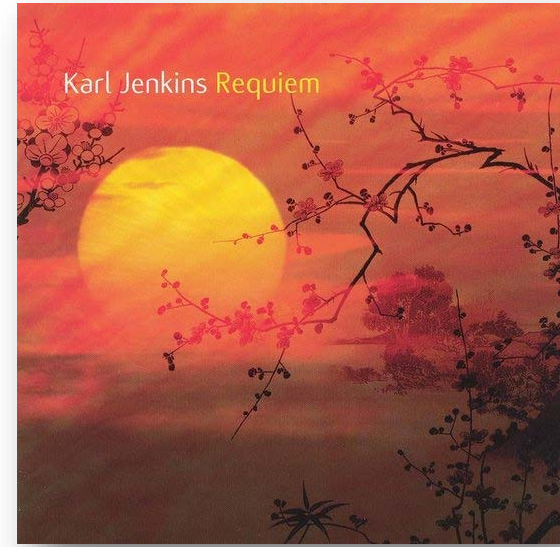
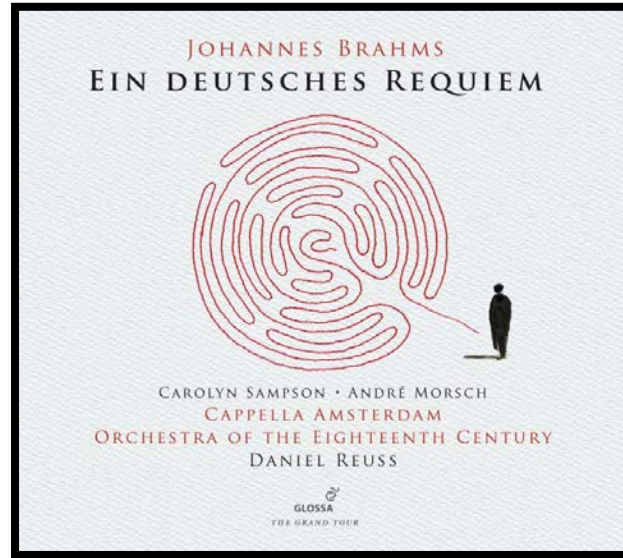
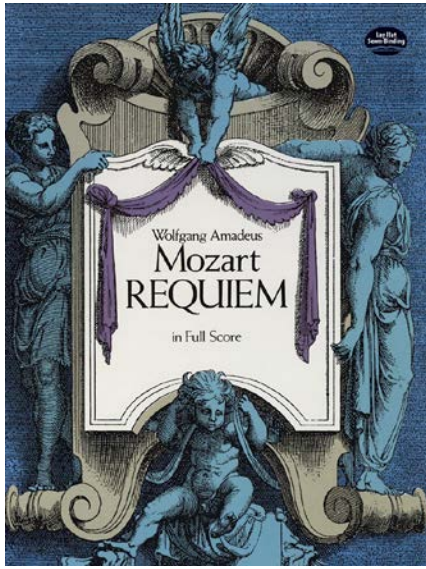
Dr. Martin Hoondert – Universiteit van Tilburg

Intr.
6.
R Equi-em * aetér- nam dó-na é- is Dómi-
ne : et lux perpé-tu- a lú-ce- at é- is.



Rust	Licht	
		Zwart
Dood		Hemel
	Hel	
Angst	Leven	Verlossing







Rest in Peace





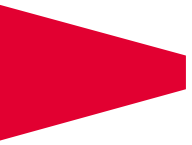


A painting of a landscape with trees and a chandelier. The scene is rendered in a textured, expressive style. The background is a mix of light blue and white, suggesting a sky or a misty atmosphere. In the foreground, several dark, vertical tree trunks are visible. To the right, a chandelier with multiple white, bowl-shaped shades hangs from the top. The overall mood is somewhat somber and contemplative.

23 november 2021

Videosessie Kunst & Rouwverwerking

**K^L
AC**

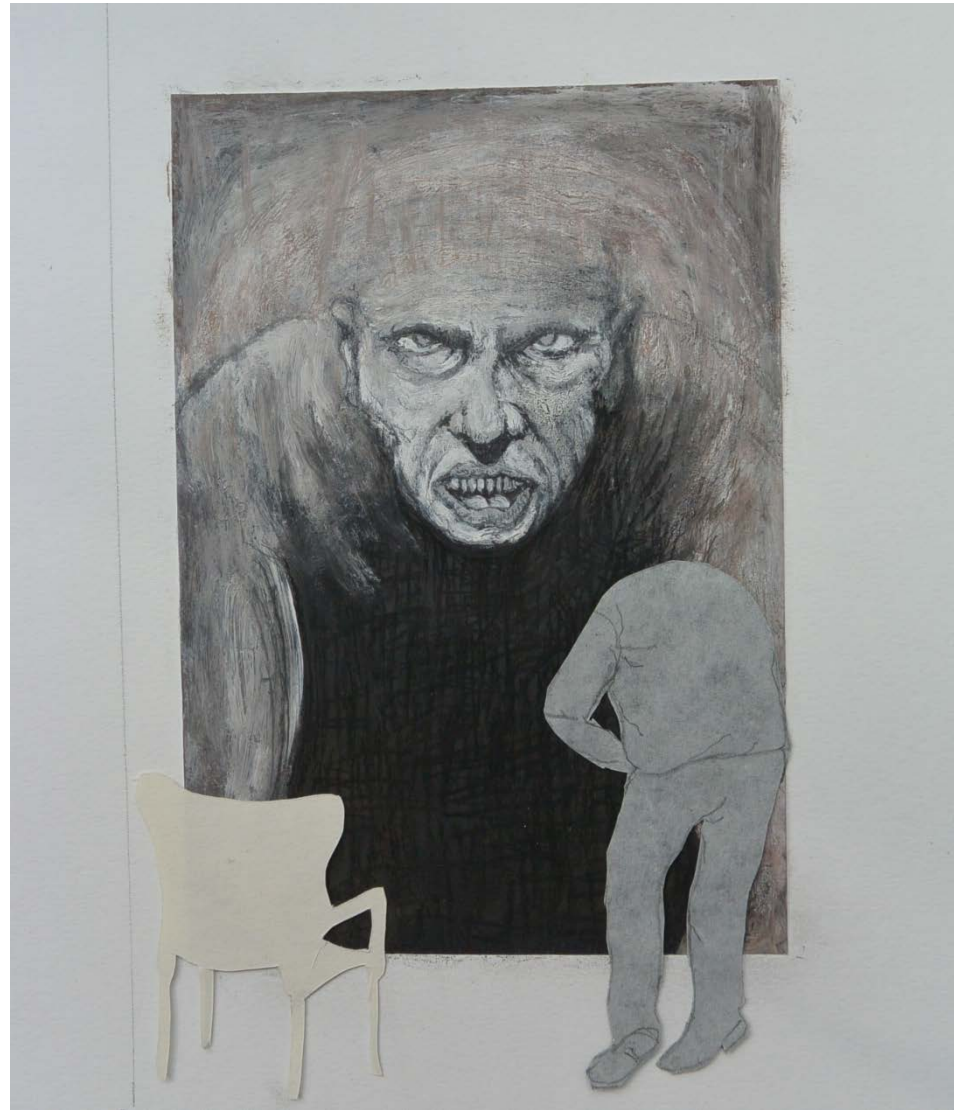


K^L
AC

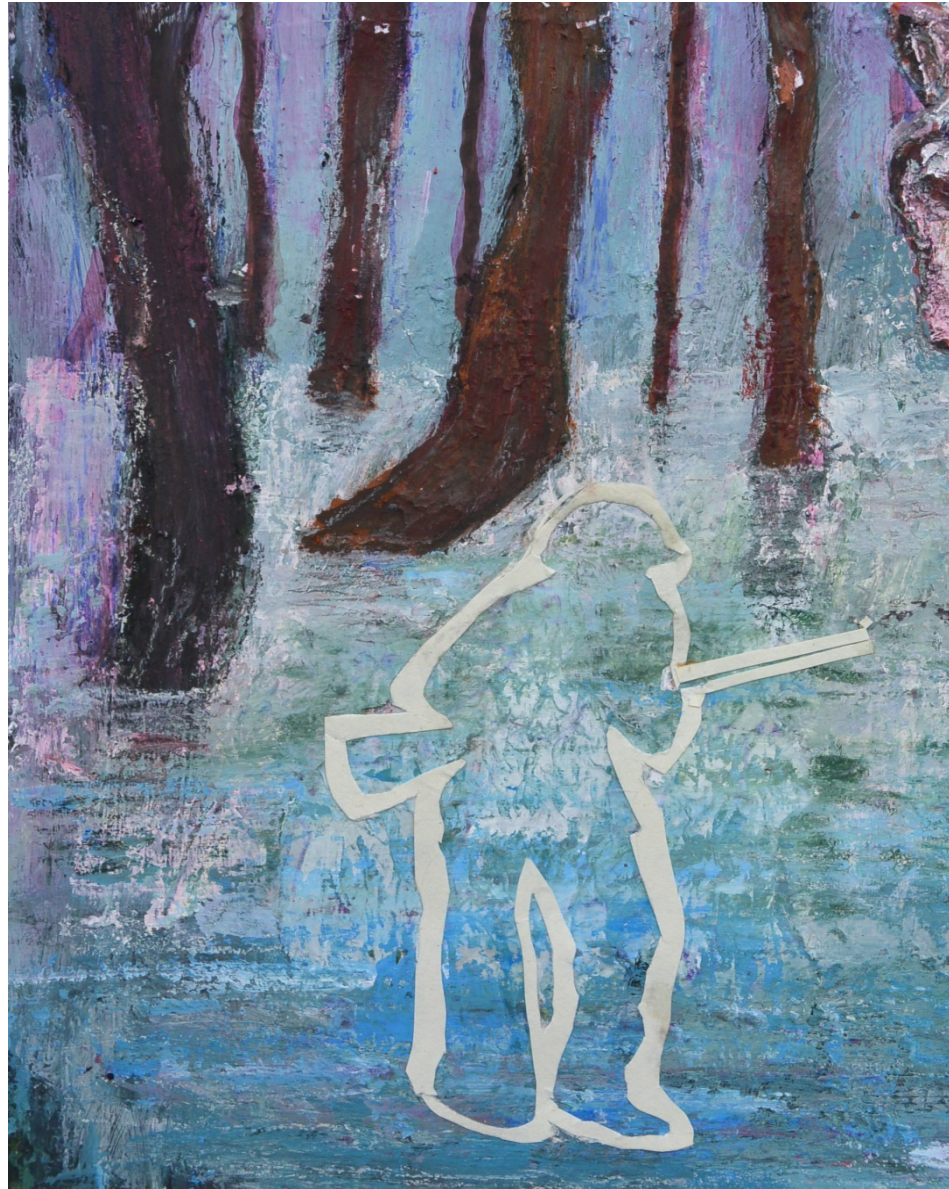
Onder de berg (1986)



Toen kwamen ze (1992, AZC Nederland)



Deja vu



Hoop kan zwaar zijn



Vaders jas (2019)



Uitzicht (2020)



Community art

Over gemis, dood en herdenken



Vieren onze momenten samen



Nog steeds tussen ons





23 november 2021

Videosessie Kunst & Rouwverwerking



K^L
A
C